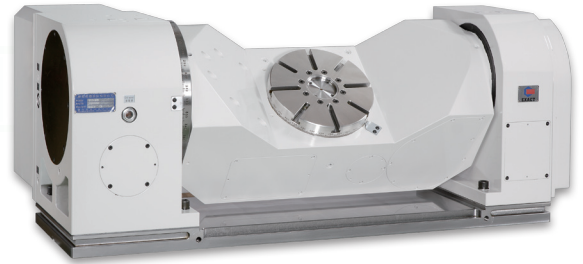




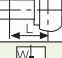
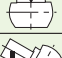

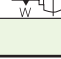


ERT

CNC Tilting Rotary Table

2 Axes motor driver with dual lead worm transmission
 0.001 increment Continue type
 Hydraulic clamping system (PHC booster available)
 Wider tilting angle for better working.



| Mode1 | | ERT-250 | | ERT-350 | | ERT-500 | |
|------------------------------------|---|-------------------|---------|--------------------|---------|--------------------|---------|
| Table Diameter | (mm) | ∅250 | | ∅350 | | ∅500 | |
| Table Center Hole Diameter | (mm) | ∅70 ^{H7} | | ∅100 ^{H7} | | ∅200 ^{H7} | |
| Table Center Through Hole Diameter | (mm) | ∅50 | | ∅60 | | ∅170 | |
| Table Horizontal Position Height | (mm) | 315 | | 390 | | 520 | |
| Table T-Slot Width | (mm) | 12 ^{H7} | | 14 ^{H7} | | 18 ^{H7} | |
| Standard guide block width | (mm) | 14 ^{H7} | | 18 ^{H7} | | 18 ^{H7} | |
| Pressure of clamp system | (kg/cm ²) | 35 by Hyd. | | 35 by Hyd. | | 35 by Hyd. | |
| Axis | | Rotary | Tilting | Rotary | Tilting | Rotary | Tilting |
| Minimum input increment | (degree) | 0.001° | 0.001° | 0.001° | 0.001° | 0.001° | 0.001° |
| Total speed (Motor 2000rpm) | Rotation Speed (r.p.m.) | 16.6 | 11.1 | 16.6 | 11.1 | 11.1 | 5.5 |
| | Gear Ratio | 1 / 120 | 1 / 180 | 1 / 120 | 1 / 180 | 1 / 180 | 1 / 360 |
| Servo Motor (Optional) | FANUC | α iF8 | α iF8 | α iF8 | α iF12 | α iF12 | α iF22 |
| | MITSUBISHI | HF104T | HF104T | HF104T | HF204S | HF204S | HF354S |
| | SIEMENS | 1FK7063 | 1FK7063 | 1FK7063 | 1FK7083 | 1FK7083 | 1FK7101 |
| Rotation torque | (kgf-m) | 82 | 102 | 200 | 200 | 240 | 240 |
| Indexing accuracy (accumulative) | (sec) | 30" | 45" | 20" | 45" | 15" | 90" |
| Repetitive accuracy | (sec) | ± 2" | ± 2" | ± 2" | ± 2" | ± 2" | ± 2" |
| Tilting angle of Tilting axis | (Horizontal = 0°) | -20°~+110° | | -20°~+110° | | -20°~+110° | |
| Clamping Torque | F  (kgf) | 1000 | | 1500 | | 2300 | |
| | F x L  (kgf-m) | 82 | | 200 | | 350 | |
| | F x L  (kgf-m) | 102 | | 200 | | 710 | |
| Load Capacity | 0°  (kg) | 120 | | 150 | | 500 | |
| | 0~90°  (kg) | 70 | | 100 | | 300 | |
| Movable load for tilting moment | W x L  (kgf-m) | 5 | | 15 | | 51 | |
| Weight | Net (kg) | 900 | | 1200 | | 2500 | |

* We reserve the right to make changes arising from constant product development without advance notice.

* The list of fitting servomotor, please refer to page 43.

◎ Standard accessories

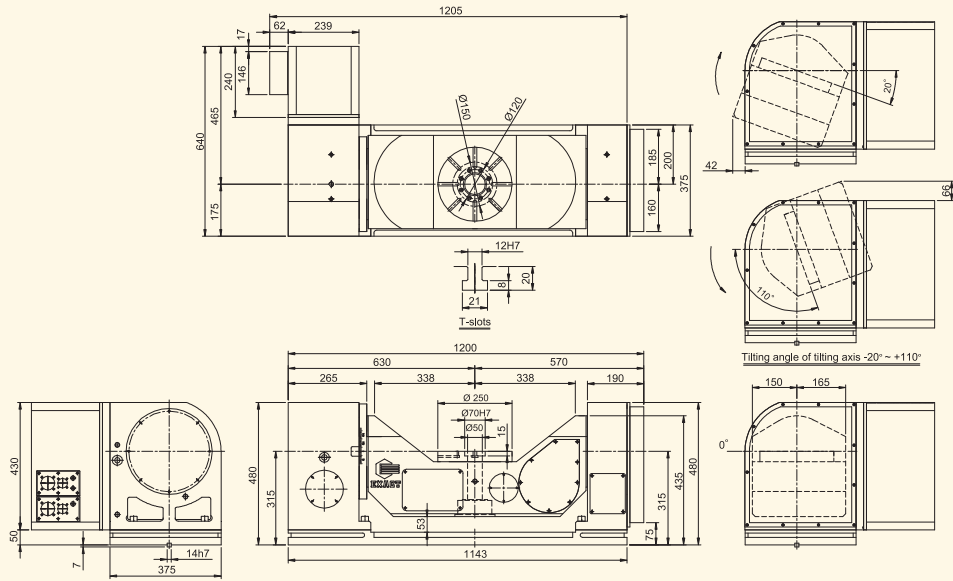
| Block nuts | Hangers |
|------------|---------|
| ◎ | ◎ |

* Optional accessories

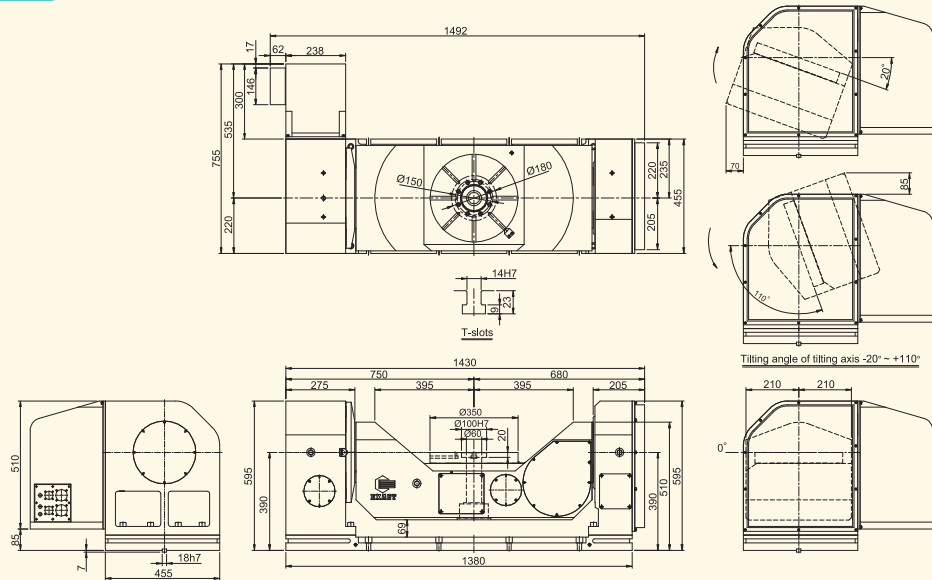
| DNS controller | Tailstock | | 3-jaw chuck with sub plate | Encoder | PHC x 2 |
|----------------|-----------|----------|----------------------------|----------|----------|
| | Taper | Support | | | |
| * (p.42) | * (p.38) | * (p.40) | * (p.46) | * (p.46) | * (p.46) |



ERT-250



ERT-350



ERT-500

